

**ENTSCHEIDUNGEN AUF
DES MESSERS SCHNEIDE**

54 ... und was nun?



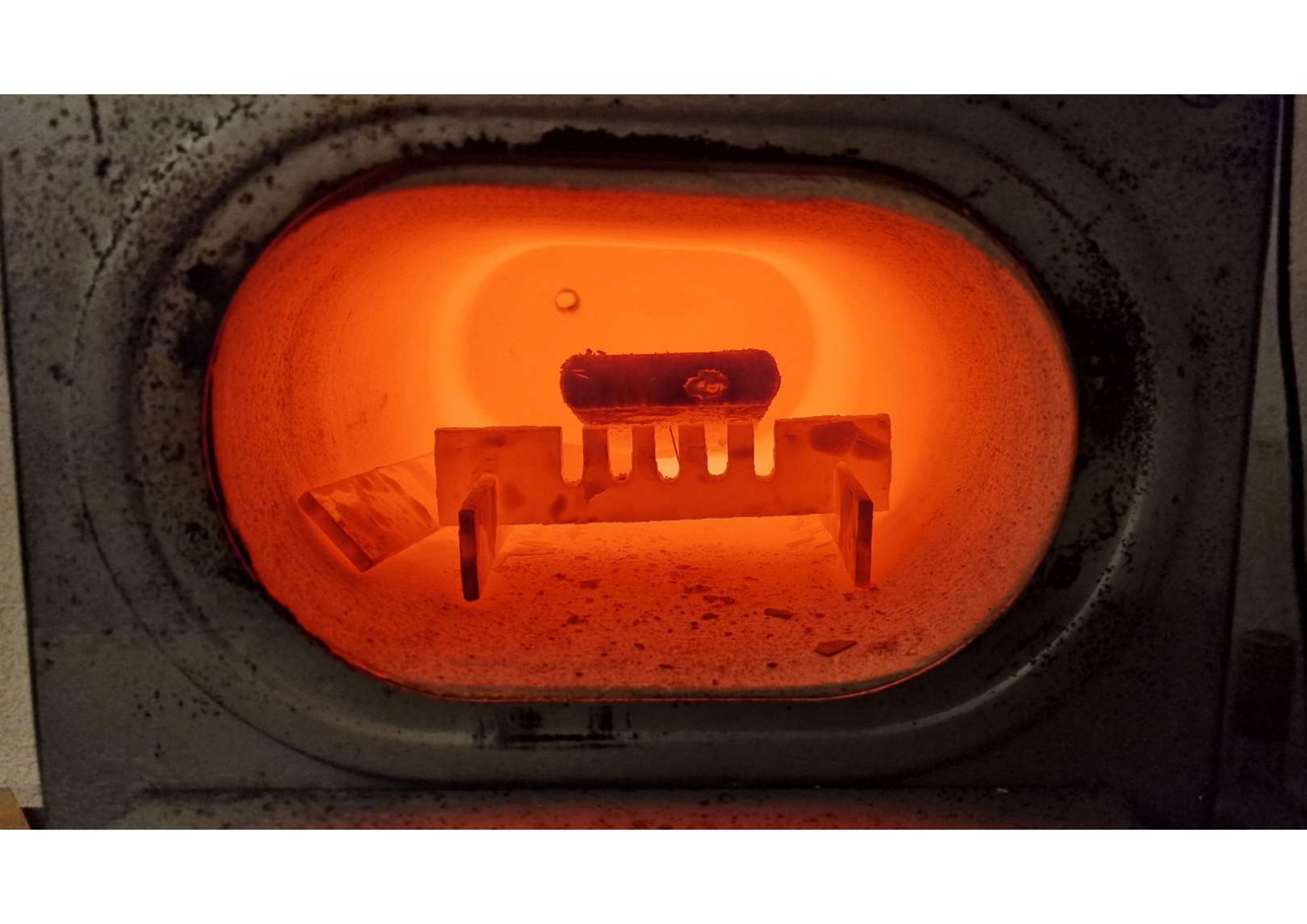






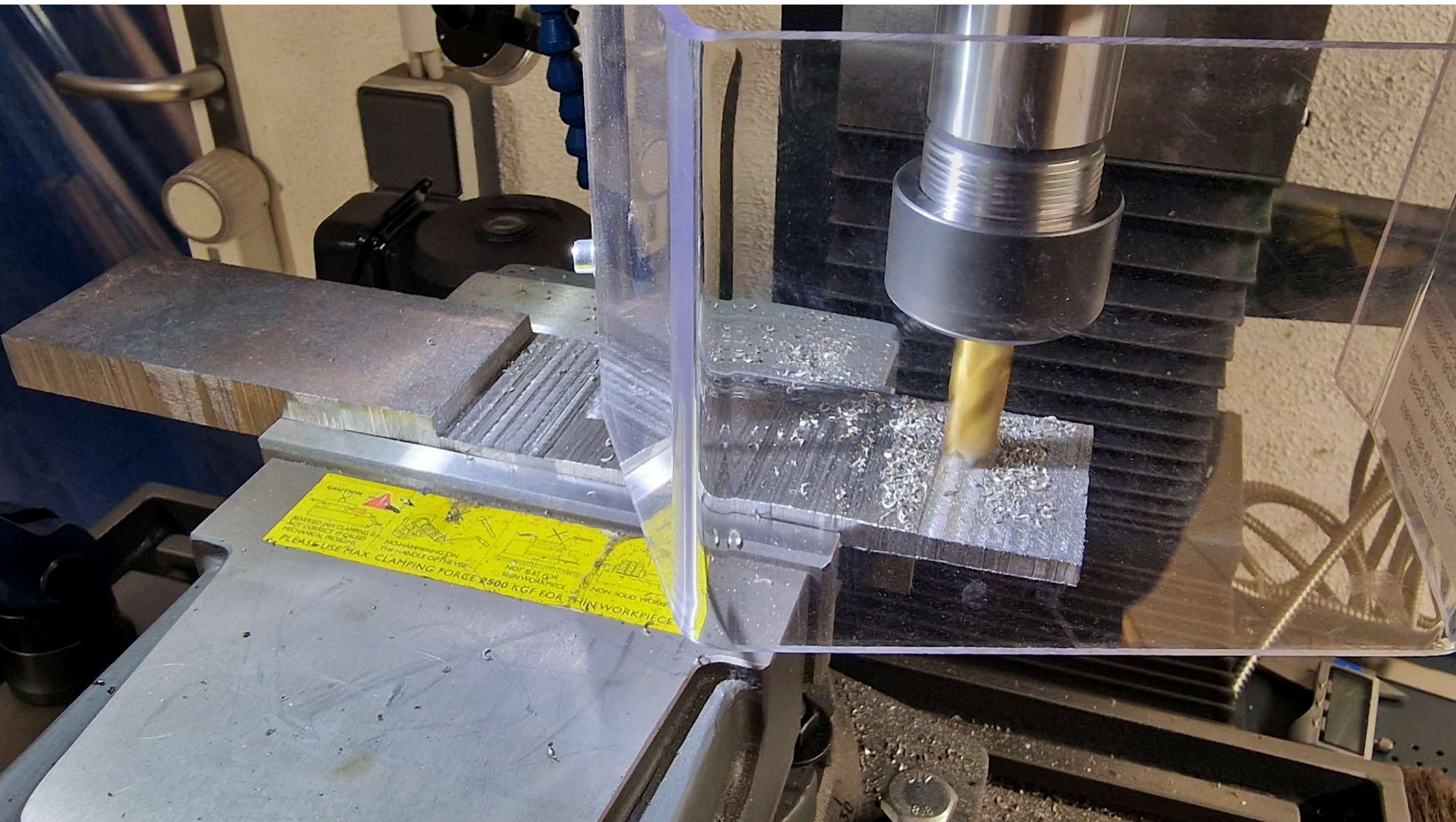
**Am Anfang
ist der Stahl**





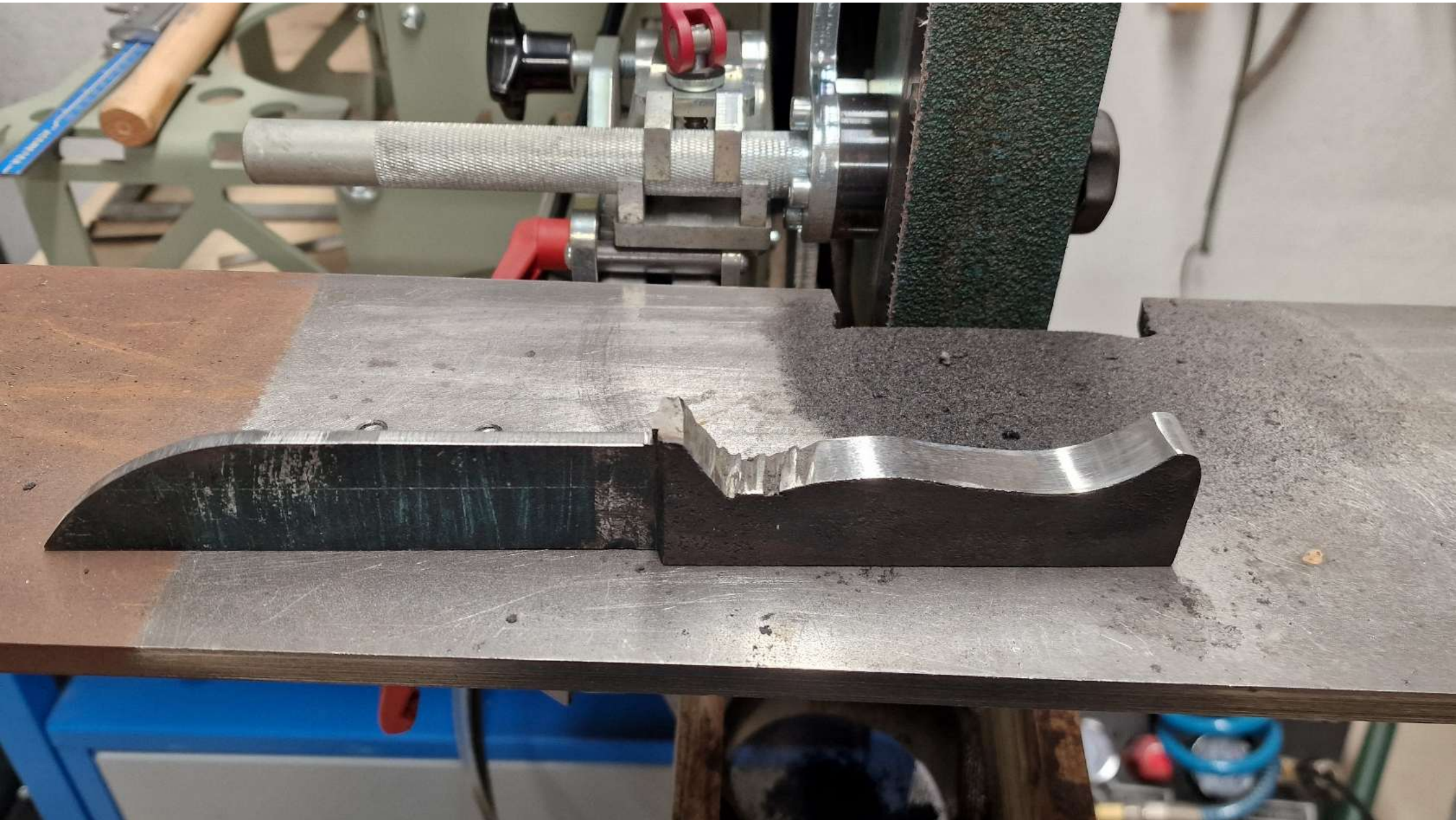










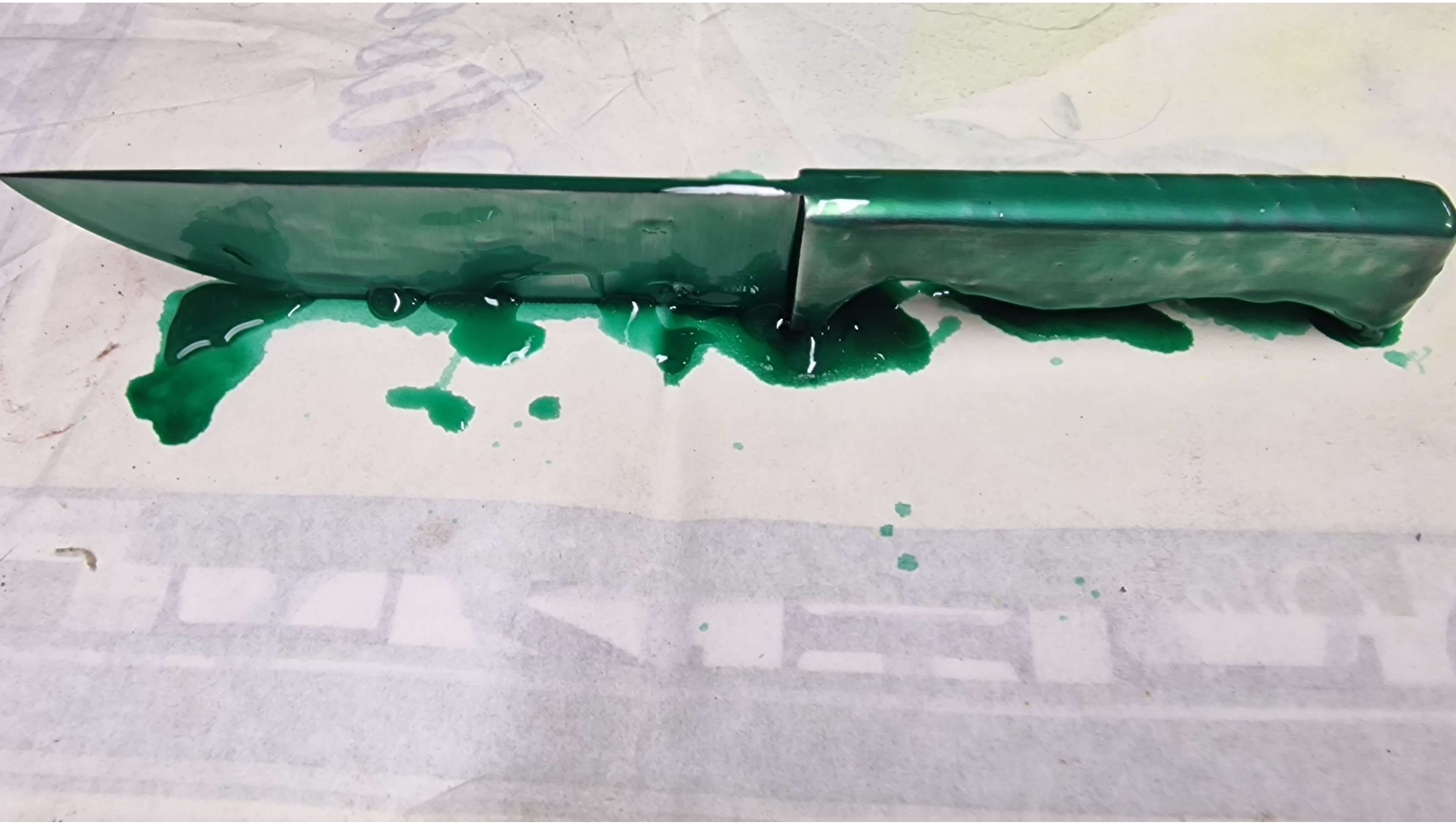


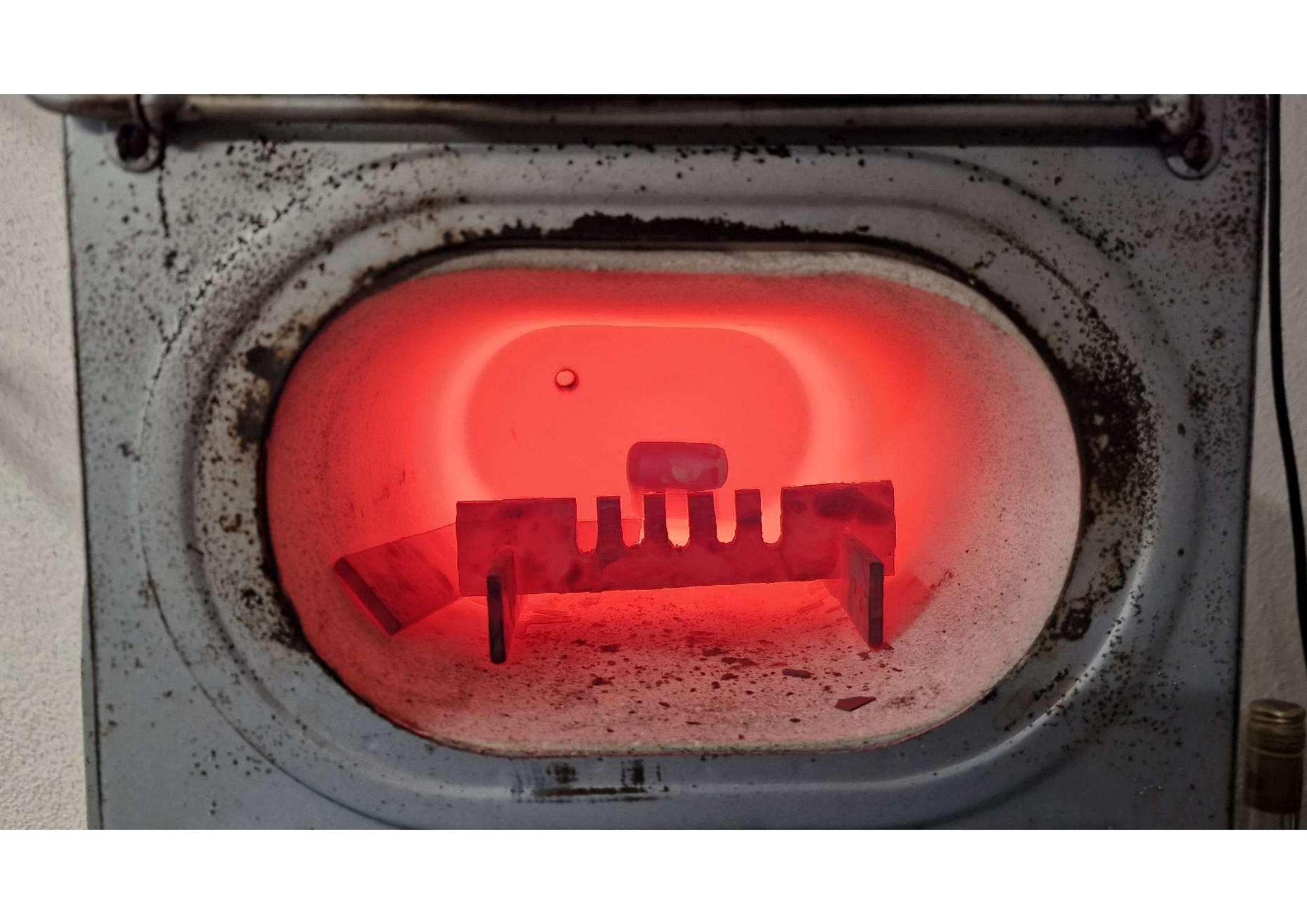


00931



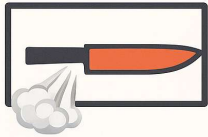






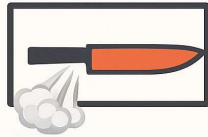


Luftkühlen



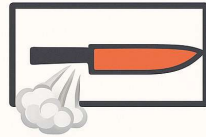
bei Raumtemperatur
ca. 30 Minuten

860–880 °C



bei Raumtemperatur
ca. 30 Minuten

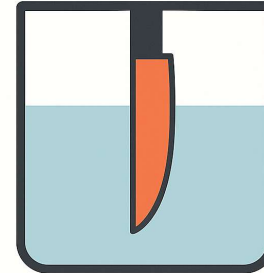
820–830 °C



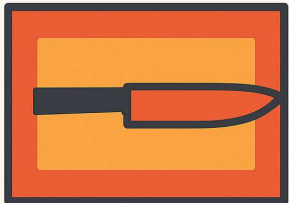
bei Raumtemperatur
ca. 30 Minuten

780–800 °C

Abschrecken



Härtungsöl auf
50–60 °C
Klinge senkrecht
eintauchen

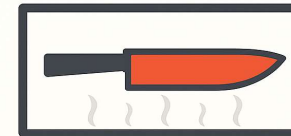


Aufheizen

Federstahl auf
830–860 °C aufheizen

Durchwärmezeit: ca.
3 Minuten (1 Min/mm)

Anlassen



200–220 °C

1 Stunde bei der gewählten Temperatur
an Luft abkühlen

Zweite Stunde gleicher Temperatur

